



Total Generator Solution Provider
Certified ISO 9001/14001

NEW

Maintenance Free BDs SERIES

Digital control generator that use pc





BDs SERIES

Introduction

We have supplied various generators with high reliability of more than 40 years experience to all over the world. With our great experience in the development and production of rotating machines, we has realized suitable generators for a variety of engines, gaining the recognition of their excellence by customers.

- Strong structure and durability
- Perfect protective device
- Outstanding maintenance service to conform to quality management program

Our generator can be used for various purpose from general to special purpose such as building(hotel, bank), industrial, military, manufacturing plant, construction etc.

Having Microprocessor diagnosis, it can control and change timer, operating sequence, alert system etc in software.

It can add the function of real-time diagnosis, control unit and electric control panel module.(Optional)

Features

◆ Special procurements winding

- AVR is become independent from generator output and it is not influenced by outside load condition supplies stable power supply to exciter.
- AVR is defended perfectly about voltage regulation by switchgear of load and thyristor loads.
- Because do motor starting loads, generator does not receive any effects by voltage drop even if it is engaged doing sudden wiring brush of and so on.
- If one load of generator was broken in cut off, other loads can be operated safely, because only engaged circuit breaker is operated.
- Extra voltage supplying for drop voltage in an accident.

◆ Class H Insulation System

- Generator used class h insulation, and there is letdown in dust, moisture, salt content etc. because using AIW in case of copper wire specially.
- Generator is safe in overload of 110%.
- Generator is designed to use to ambient temperature 50 degree.
- Life is semi-permanent by special procurements insulation.

◆ 2/3 Pitch stator winding

- Because 3 harmonics are not happened, communication obstacle is less.
- About single phase load, voltage waveform is good.
- Influence about non-linear load is less.

◆ Lead wire

- Lead wire withdraws leader 12 lines and because alteration of low tension, high tension, single phase connection, delta connection etc. is possible, the range of application is wide.
- Due to withdraw coil directly, there is no welding resistance when withdraw rescue and there is no worry of voltage breakdown.

◆ Automatic Voltage Regulator

- Is low speed protector.
When this unit is 60Hz, it is 56Hz, and low speed protector prevents generator and AVR's damage because reducing output voltage of generator in case use by 46Hz low when is 50Hz.
- Is overload protector.

Digital Control Generator

◆ Engine/Generator control panel features and function

- Automatic Engine Starting and Stopping
- Custom Graphical Icon type LCD Display
- PC Configurable via MS-Windows based software
- Provides Engine Instrumentation
- Provides Generator Output Instrumentation
- Simple selector switch controlled Operation
- Real time Diagnostics via MS-Windows
- Configurable Digital Input
- Configurable Relay Output
- Configurable Timer Settings



◆ Display scroll

- Generator Volts L1-N, L2-N, L3-N
- Generator Volts L1-L2, L2-L3, L3-L1
- Generator Amps L1, L2, L3
- Generator Frequency Hz
- Engine Speed RPM
- Engine Oil Pressure (PSI & Bar)
- Engine Temperature (°C & °F)
- Plant battery Volts
- Engine Hours Run

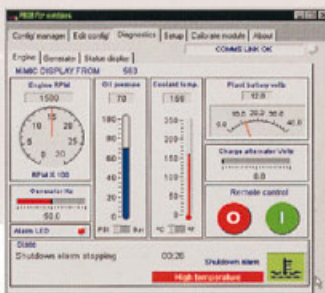
◆ Alarm

- Generator Over/Under Volts (AC/DC)
- Generator Over/Under Frequency (Hz)
- Engine Over/Under Speed
- Emergency stop
- Low oil Pressure
- High coolant temperature
- Fail to start (Over crank)
- Electrical trip
- Generator high current

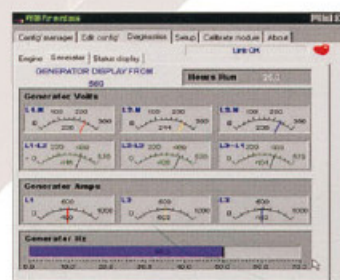
Option

◆ Real-time Diagnostics Device & Relay Expansion Module

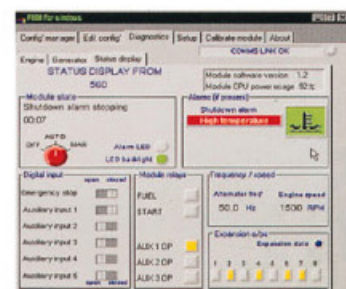
- Real-time Diagnostics using Personal Computer



Relative measuring valve is displayed.



Voltage, current, frequency are displayed.



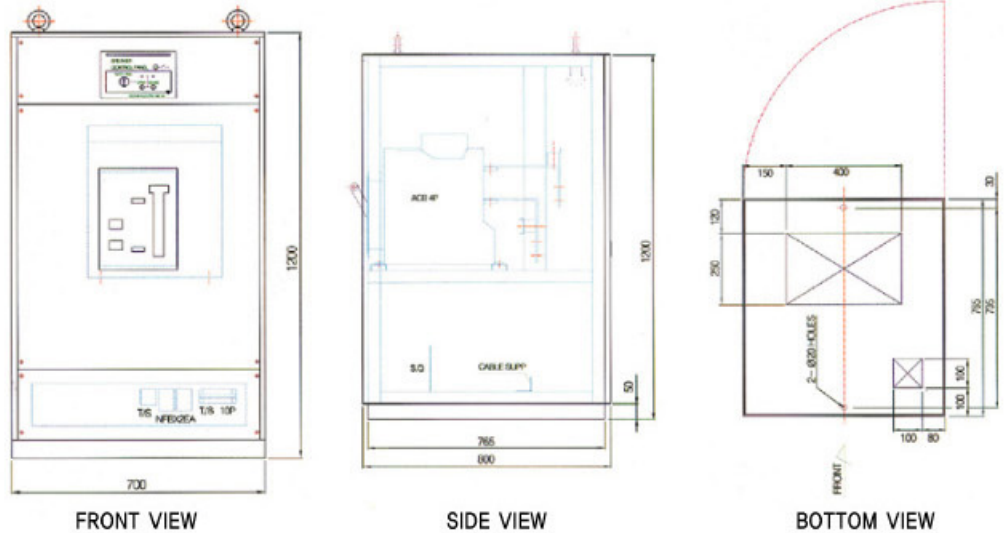
Alarm of module and control state are displayed.



Brushless – three phase synchronous generator, Rating Voltage 380V/220V, Pole 4P

SPEC	MODEL	UNIT	BDS	BDS	BDS	BDS	BDS	BDS	BDS	BDS	BDS	BDS	BDS	BDS	BDS	BDS	BDS	BDS	BDS	BDS	
			-20	-26	-50	-60	-85	-115	-170	-200	-250	-275	-300	-320	-360	-400	-450	-500	-550	-600	
GENERATOR	STAND-BY POWER (50Hz/60HZ)	kW	17/20	22/26	40/50	48/60	72/85	101/115	145/170	175/200	-/250	242/275	-/300	284/320	326/360	369/400	396/450	447/500	-/550	520/600	
	PRIME POWER (50Hz/60HZ)	kW	15/18	20/24	35/45	43/55	64/77	91/105	131/155	156/182	-/227	220/250	-/-	258/290	293/327	323/364	359/409	398/455	-/500	480/545	
	DIMENSION	L	mm	1605	1800	1872	2102	2114	2137	2470	2556	2850	2850	2920	2830	2900	2900	3070	3130	3355	3355
		W	mm	750	750	750	760	850	850	900	900	1000	1000	1000	1390	1390	1390	1390	1390	1390	1390
		H	mm	1113	1040	1167	1172	1371	1360	1415	1525	1700	1700	1560	1950	1950	1950	1950	1950	1820	1820
	FUEL TANK CAPACITY	l		30	40	50	70	120	120	160	150	230	230	330	330	330	330	330	-	-	
DRY WEIGHT	kg		586	710	835	1032.4	1353	1483	1794	1907	2280	2280	2340	2680	2875	2875	3251	3371	4010	4010	
ENGINE	MODEL	UNIT	DC24	DB33	P034T1	DB58	D1146	D1146T	DE12T	P066T1	P26T1-3	P126T1	P126T1-1	P158LE-1	P158LE-1	P158LE-1	180LE-1	180LE-1	P222LE-1	P222LE-1	
	STAND-BY POWER (50Hz/60HZ)	PS	24/34	39/47	65/82	95/80	143/118	187/160	270/226	303/270	343/305	370/405	-/465	437/491	492/546	563/602	601/677	674/734	752/850	781/883	
	PRIME POWER (50Hz/60HZ)	PS	25/31	35/43	57/75	73/87	105/130	145/170	205/245	240/279	304/343	328/378	-/422	399/447	444/498	494/547	548/617	602/676	666/765	723/803	
	DISPLACEMENT	cc	2,369	3,268	3,268	5,785	8,071	8,071	11,051	8,071	11,051	11,051	11,051	11,051	14,618	14,618	14,618	18,273	18,273	21,927	21,927

BREAKER CONTROL PANEL



◆ Supply Item

Silencer, Battery Charger, Battery, Belows, Basis tools, Battery cable terminal Filter(fuel and oil) ; Generator manual, Engine manual

◆ Option

Vibration-isolation spring, Breaker control panel, FuelTan k(490l /990l)
Real time diaghosis software & Interface system, Relay extension module

KE Koeng Co., Ltd.

B-806, Twintech Tower, 34 5-9, Gasan-Dong, Geumcheon-gu, Seoul, Korea.
TEL : +82-2-838-6300 FAX : +82-2-6292-6292, +82-2-839-4700
http://www.koreaeng.co.kr E-mail : export@koreaeng.co.kr